
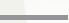




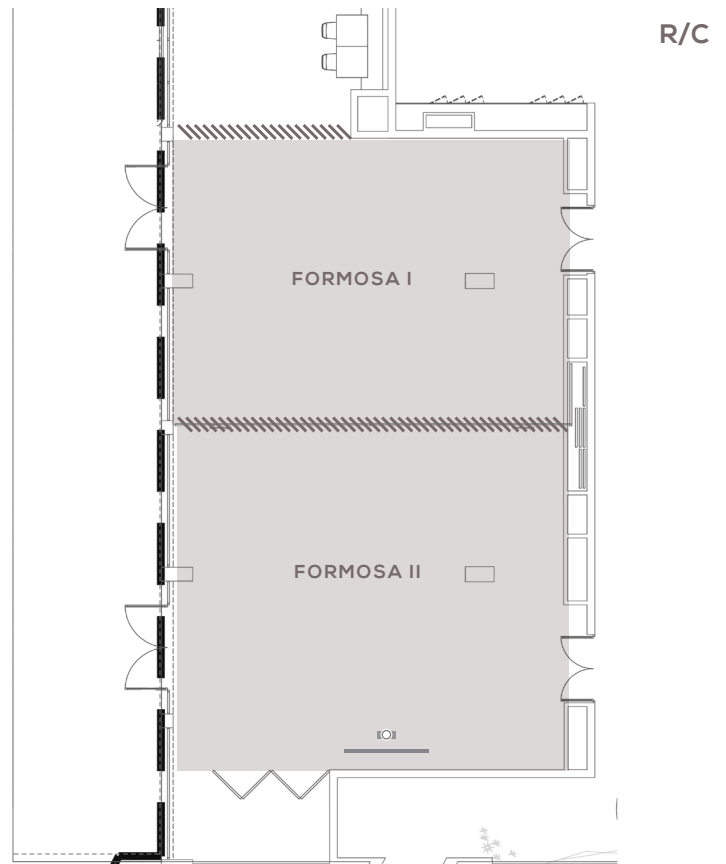
MEETING ROOMS







AUDIOVISUAL EQUIPMENT AVAILABLE
(upon payment)

- LCD projector:  1 projector (4600 lumens)
- Screen:  1 Built-in screen with (2,40 m x 1,89 m)
- 2 Portable LCD's (50")
- Sound system
- 2 Wireless handheld microphones

SUPPORT SERVICES AVAILABLE

- Flip charts
- Pulpit
- Wi-Fi in the meeting rooms and public areas free of charge



ROOM	FEATURES							CAPACITIES				
	Area m2	Width	Lenght	Height	Nat. light	Theatre	Class-room	U	Boardroom	Cabaret	Cocktail	Banquet
FORMOSA I + II	160	10	16	3,2	✓							
FORMOSA I	75	10	7,5	3,2	✓	130	70	50	60	60	150	130
FORMOSA II	85	10	8,5	3,2	✓	50	40	30	36	42	80	70



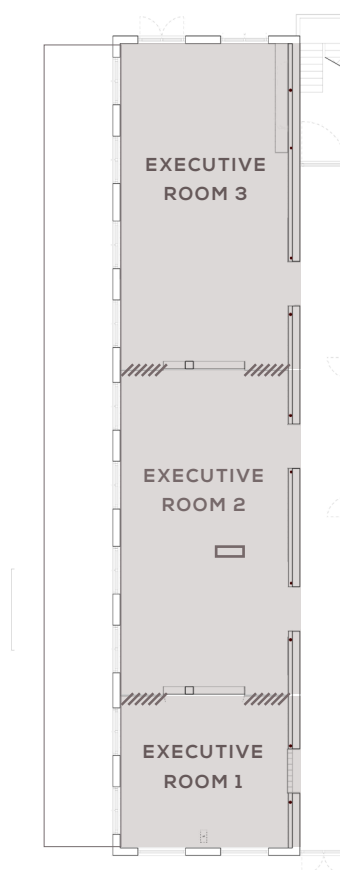
MEETING ROOMS

AUDIOVISUAL EQUIPMENT AVAILABLE
(upon payment)

- 2 Portable LCD's (50")
- Sound system
- 2 Wireless handheld microphones

SUPPORT SERVICES AVAILABLE

- Flip charts
- Pulpit
- Wi-Fi in the meeting rooms
and public areas free of charge



R/C

ROOM	FEATURES					CAPACITIES							
	Area m ²	Width	Lenght	Height	Nat. light	Theatre	Classroom	U	Boardroom	Cabaret	Cocktail	Banquet	
EXECUTIVE ROOM 1	42	6	6	2,3	✓	25	12	14	18	X	30	X	
EXECUTIVE ROOM 2	87	6	12,8	2,3	✓	40	18	X	X	X	70	X	
EXECUTIVE ROOM 3	86	6	11,8	2,3	✓	50	30	30	36	30	70	60	

